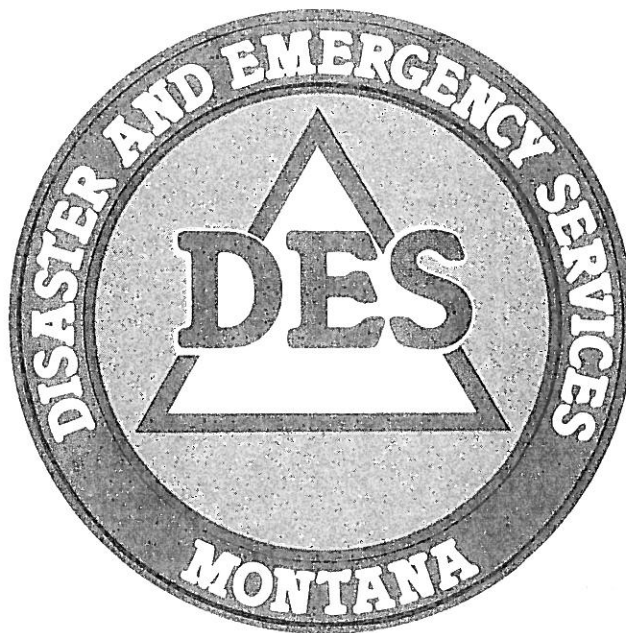


STATE OF MONTANA



RACES

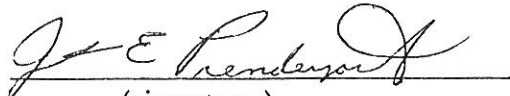


Radio Amateur Civil Emergency Service

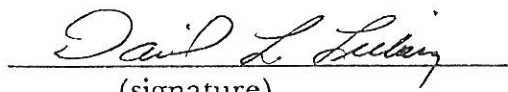
PLAN

APPROVALS AND CONCURRENCES

APPROVAL:



(signature)

June 15, 1993 Adjutant General,
(date) Department of
Military Affairs

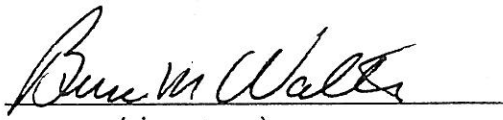

(signature)

June 15, 1993 Acting Administrator,
(date) Disaster and Emergency
Services Division


CONCUR:


(signature)

6-15-93 Communications Officer,
(date) Disaster and Emergency
Services Division


(signature)

7-26-93 State RACES Officer
(date)


(signature)

8-7-93 Montana ARRL Section
(date) Manager

STATE OF MONTANA
RADIO AMATEUR CIVIL EMERGENCY SERVICE PLAN

I. SCOPE

This plan provides guidance for the Radio Amateur Civil Emergency Service (RACES) to support state and local government officials during certain emergency conditions.

II. PURPOSE

This plan is intended to provide coordinated operation between state and local government emergency management officials and the RACES organization during times when there are extraordinary threats to the safety of life and/or property.

The role of the State RACES organization is to provide communication link(s) between the state Emergency Operating Center (EOC) and local EOCs.

III. AUTHORITY

Title 47 Code of Federal Regulations (CFR), Part 97, Amateur Radio Service.

IV. ADMINISTRATION

A. MONTANA DISASTER & EMERGENCY SERVICES DIVISION

The Montana Disaster & Emergency Services (DES) Division is responsible for coordinating State RACES exercises, maintaining State RACES records, and updating the State RACES Plan.

B. STATE RACES OFFICER

1. The State RACES Officer is appointed, in writing, by the Administrator of the Montana Disaster and Emergency Services (DES) Division. The State RACES Officer serves as a liaison between the RACES organization and the DES Division, recruits members, processes RACES applications, evaluates State RACES members, and keeps the Administrator informed of all RACES activities, progress, and needs.

2. The State RACES Officer is a General Class Amateur, or higher, thoroughly knowledgeable of Federal Communications Commission (FCC) Rules and Regulations and familiar with the functions of the Amateur Radio Relay League (ARRL) and the Amateur Radio Emergency Services of ARRL.

C. RACES ELIGIBILITY

Any United States citizen who possesses a valid FCC Amateur Radio Operator License, technician class or higher, is eligible to become a member of RACES.

D. RACES APPLICATION

Each prospective member completes a RACES Operator Application and returns it to the State RACES Officer. The State RACES Officer reviews the application and recommends acceptance or nonacceptance to the Montana DES Division Administrator. The Administrator prepares a letter designating the applicant as a certified RACES member. A copy of the letter is kept in the State RACES records.

E. RACES IDENTIFICATION (RESERVED)

F. RACES MEMBERS

Are responsible for:

1. Briefing the State RACES Officer of any changes in their equipment or amateur status that may affect RACES communications operations;
2. Developing a strong background in emergency communications procedures, FCC Rules and Regulations, and network procedures;
3. Being available when emergency communications are required;
4. Notifying the State RACES Officer, in writing, when terminating membership in RACES.

5. RACES MEMBERSHIP

6. RACES members serve as volunteers in a non-pay status. When activated by the Montana DES Division Administrator, or authorized representative, for a Governors disaster or emergency declaration RACES members will be considered state employees for the purpose of:
 - a. Workers Compensation Insurance coverage;
 - b. Reimbursement for travel and per diem costs.
7. Each member should be evaluated by the State RACES Officer every 2 years for satisfactory participation in the RACES organization. If participation is satisfactory, membership is automatically extended for another 2 years; if not, membership will be terminated, in writing, by the Administrator of the Montana DES Division.

G. RACES RECORDS

The Montana DES Division will maintain the following records:

1. The current State RACES plan;
2. Records of all RACES activations, drills, exercises, and training;
3. Individual RACES member files, to include application form, copy of FCC license, training, and participation in RACES activations for emergency situations.

V. OPERATIONS

A. ACTIVATION

RACES may be activated by the Montana DES Division Administrator or authorized representative.

B. COMMUNICATION SYSTEMS

1. HF Voice
2. HF Packet
3. VHF Voice
4. VHF Packet

C. TYPES OF MESSAGES

Situation reports, damage assessment, resource requests, and administrative messages are typical of the types of messages that may be sent on RACES communication systems.

D. MESSAGE PRECEDENCE

1. IMMEDIATE: Messages containing information regarding the imminent threat to life or property. IMMEDIATE precedence messages are processed ahead of all other messages.
2. PRIORITY: Messages containing important information supporting response or recovery operations. PRIORITY precedence messages are processed ahead of ROUTINE messages.
3. ROUTINE: Messages containing administrative information related to response or recovery operations. ROUTINE precedence messages are processed after all other messages.
4. All messages are processed based on precedence and order of receipt.

E. TRANSMISSION MODE

1. Voice communication will fulfill communication requirements in most situations. Use voice communication when printed copy is not necessary.
2. Packet operation is the transfer of information between two computers using radio links. Information may be passed between packet stations at high speed with complete accuracy. Packet is recommended when printed copy is required.

F. PACKET COMMUNICATION PROCEDURES

To minimize potential congestion of packet repeaters and limit station connect time:

1. Prepare message and save to a file before connecting to the intended receiving station;
2. Make connection to the intended receiving station, download the message file, and disconnect (do not ask for or wait for operator keyboard verification of successful connect);

3. Avoid operator keyboard communications between packet stations.

G. STATION IDENTIFICATION

RACES stations shall include the station location as well as the operator's call sign as part of the station call sign (e.g. "This is the State EOC, W7TCK"; or "This is the Lincoln County EOC, K7XXX").

VI. GENERAL LIMITATIONS

- A. RACES stations operating on any of the frequencies listed in this plan shall not cause harmful interference to other stations or services that might share these frequencies.
- B. All messages transmitted by a RACES station must be authorized by the emergency management agency for the affected area.
- C. All messages transmitted in connection with drills or tests must be identified as such by the use of the phrase "THIS IS A TEST MESSAGE" at the beginning and end of the message.

VII. EXERCISES

- A. The State DES Division may organize and conduct a full scale RACES communication exercise at least once each calendar year to test the State RACES Plan.
- B. The State RACES Officer may organize and conduct RACES drills and exercises as needed to train operators in emergency communication procedures.

VIII. PLAN MAINTENANCE

The DES Division Communications Officer and the State RACES Officer will review the State RACES Plan at least once each calendar year and make any necessary updates or revisions to the plan.

RADIO AMATEUR CIVIL EMERGENCY SERVICE

REGISTRATION FORM

Name: _____ Call: _____
 Address: _____
 City: _____ State: _____ Zip: _____
 Bus. Phone: _____ Home Phone: _____ County: _____
 License Class: _____ Primary Radio Interest: _____

Check (X) Bands/Modes you can operate:

	160	80	40	20	15	10	6	2	220	OTHER
CW										
FM										
RTTY										
SSB										
MOBILE										
PACKET										
IF OPERATING PACKET, THE CALLSIGN OF YOUR PBBS IS: _____										

Can you operate without commercial power? ☐ Yes ☐ No

If yes what bands? _____

The State RACES organization supplements state and local government communications during disaster or emergency situations.

By completing and signing this registration form you are volunteering to be a member of the State RACES organization and are responsible for:

1. Briefing the State RACES Officer of any changes in your equipment or amateur status that may affect RACES communications operations;
2. Developing a strong background in emergency communications procedures and FCC Rules and Regulations;
3. Being available when emergency communications are needed;
4. Notifying the State RACES Officer, in writing, when terminating membership in RACES.

Send completed form to: Montana DES Division
 Attn: State RACES Officer
 1100 North Main
 Helena, MT 59620-2111

Signed: _____ Date: _____

STATE OF MONTANA
RACES PLAN

LIST OF ANNEXES

- A: KEY RACES PERSONNEL AND THEIR PHONE NUMBERS
- B: LIST OF AUTHORIZED RACES RADIO FREQUENCIES
- C: FUNCTIONAL DIAGRAM OF STATE AND DISTRICT RACES RADIO NETS
AND FREQUENCIES
- D: MESSAGE FORMS
 - D-1: RACES RADIO MESSAGE FORM
 - D-2: LOCAL GOVERNMENT SITUATION REPORT FORM
- E: RACES OPERATOR APPLICATION FORM
- F: STATE EOC RACES ACTIVATION
- G: MONTANA DES DISTRICT REPRESENTATIVES AND DISTRICT
ORGANIZATION
- H: FEMA/ARRL MEMORANDUM OF UNDERSTANDING
- I: RACES TRAINING NET

Montana State RACES Personnel

State RACES Officer
Bruce Walters, N7MVX
Home 227-5059
Work 444-8304

Asst State RACES Officer
Ralph Badger, WG7Q
Home 443-4629
Work

State Packet Coordinator
John Wright, WA7TUW
Home 449-8136

State Net Coordinator
Pete Peters, KF7R
Home 222-2601

Surplus Property Coordinator
Dick Beaton, N7RB
Home 442-9645

District 1 RACES Coordinator (Missoula)

Bob Black, KC7HP
Home 543-4894

District 2 RACES Coordinator (Great Falls)

Marv McDonald, N7PBY
Home 452-5520

District 3 RACES Coordinator (Helena)

District 4 RACES Coordinator (Billings)

ANNEX A

List of Frequencies
(Wartime Emergency Situations)

The frequency bands listed below are available to stations transmitting communications in RACES on a shared basis with the amateur service. In the event of an emergency that necessitates the invoking of the President's War Emergency Powers under the provision of Section 706 of the Communication Act of 1934, as amended, **only** RACES stations and amateur stations participating in RACES may transmit on the following frequencies:

kHz	1800-1825	Mhz	28.55-28.75
	1975-2000		29.237-29.273
	3500-3550		29.45-29.65
	3930-3980		50.35-50.75
	3984-4000		52-54
	7079-7125		144.50-145.71
	7245-7255		146-148
	10100-10150		2390-2450
	14047-14053		
	14220-14230		
	14331-14350		
	21047-21053		
	21228-21267		

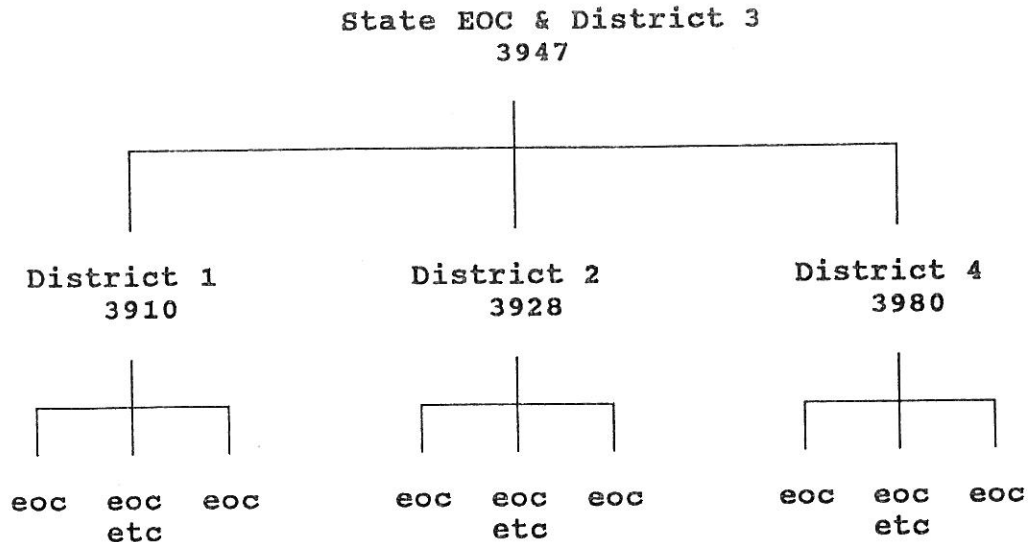
In addition, 1.25 cm (220.0 - 225.0), 70 cm (420.0 - 450.0), and 23 cm (1240-1300 Mhz) are available.

The above are available to RACES stations on a National basis. The Montana State RACES will operate on the following frequencies:

State EOC Net	3947	Alt 7247
District 1	3910	Alt 7230
District 2	3928	Alt 7240
District 3	3947	Alt 7247
District 4	3980	Alt 7280

The higher frequencies used will depend on your location within the state. These frequencies will correspond to locally used repeater frequencies and will depend on the local RACES plan. Generally, repeater frequencies will be used within the districts for district communication and 75 meters used for voice communications between districts and the State EOC.

DIAGRAM OF STATE AND DISTRICT RACES NETS



District 1 Net provides communication between District 1 EOC (Missoula) and County EOCs within District 1.

District 2 Net provides communication between District 2 EOC (Lewistown) and County EOCs within District 2. Because the District 2 Net control is located in Great Falls a direct link between Great Falls and the District EOC in Lewistown must be established.

District 3 Net operates on the State EOC frequency of 3947. Communication with most District 3 countries can be moved to 2M repeaters.

District 4 Net provides communications between District 4 EOC (Miles City) and County EOCs within District 4. Because the District 4 Net control is located in Billings a direct link between Billings and the District EOC in Miles City must be established.

RACES Radio Message Form

<input type="checkbox"/> Routine <input type="checkbox"/> Priority <input type="checkbox"/> Immediate	Reply Requested: <input type="checkbox"/> Yes <input type="checkbox"/> No	Date: (month/day)	Time (2400)	Message #:	
TO: Name/Title Location		From: Name/Title Location			
Message Text: <div style="display: flex; justify-content: space-between;"> <div style="width: 20%; border-bottom: 1px solid black;"></div> <div style="width: 20%; border-bottom: 1px solid black;"></div> <div style="width: 20%; border-bottom: 1px solid black;"></div> <div style="width: 20%; border-bottom: 1px solid black;"></div> <div style="width: 20%; border-bottom: 1px solid black;"></div> </div> <div style="display: flex; justify-content: space-between;"> <div style="width: 20%; border-bottom: 1px solid black;"></div> <div style="width: 20%; border-bottom: 1px solid black;"></div> <div style="width: 20%; border-bottom: 1px solid black;"></div> <div style="width: 20%; border-bottom: 1px solid black;"></div> <div style="width: 20%; border-bottom: 1px solid black;"></div> </div> <div style="display: flex; justify-content: space-between;"> <div style="width: 20%; border-bottom: 1px solid black;"></div> <div style="width: 20%; border-bottom: 1px solid black;"></div> <div style="width: 20%; border-bottom: 1px solid black;"></div> <div style="width: 20%; border-bottom: 1px solid black;"></div> <div style="width: 20%; border-bottom: 1px solid black;"></div> </div> <div style="display: flex; justify-content: space-between;"> <div style="width: 20%; border-bottom: 1px solid black;"></div> <div style="width: 20%; border-bottom: 1px solid black;"></div> <div style="width: 20%; border-bottom: 1px solid black;"></div> <div style="width: 20%; border-bottom: 1px solid black;"></div> <div style="width: 20%; border-bottom: 1px solid black;"></div> </div>					
RADIO OPERATOR USE ONLY					
Operator Msg #	Precedence	Check	Time Filed		
Receive		Sent		Operator Call Sign	
Time:	Rec From:	Frequency:	Time:		Sent To:

**LOCAL GOVERNMENT
SITUATION REPORT FORM**

County/City: _____
(If this is a county report, but does not include all affected cities or towns, specify the cities or towns excluded.)

Name of Reporter: _____

Title/Position: _____

Date/Time: _____ Telephone: _____

Information To Transmit:

1. Type of Emergency or Disaster: _____

2. Area Affected: _____

3. Severity and Magnitude: _____

4. People Problems: _____

5. Is Lifesaving Assistance Needed? _____ What Type? _____

6. Damage to Public Property: _____

7. Damage to Private Property:_____

8. Assistance Needed:_____

9. Comments:_____

Person Taking This Report:_____Date:_____

RADIO AMATEUR CIVIL EMERGENCY SERVICE

REGISTRATION FORM

Name: _____ Call: _____

Address: _____

City: _____ State: _____ Zip: _____

Bus. Phone: _____ Home Phone: _____ County: _____

License Class: _____ Primary Radio Interest: _____

Check (X) Bands/Modes you can operate:

	160	80	40	20	15	10	6	2	220	OTHER
CW										
FM										
RTTY										
SSB										
MOBILE										
PACKET										
IF OPERATING PACKET, THE CALLSIGN OF YOUR PBBS IS: _____										

Can you operate without commercial power? ☐ Yes ☐ No

If yes what bands? _____

The State RACES organization supplements state and local government communications during disaster or emergency situations.

By completing and signing this registration form you are volunteering to be a member of the State RACES organization and are responsible for:

1. Briefing the State RACES Officer of any changes in your equipment or amateur status that may affect RACES communications operations;
2. Developing a strong background in emergency communications procedures and FCC Rules and Regulations;
3. Being available when emergency communications are needed;
4. Notifying the State RACES Officer, in writing, when terminating membership in RACES.

Send completed form to: Montana DES Division
Attn: State RACES Officer
1100 North Main
Helena, MT 59620-2111

Signed: _____ Date: _____

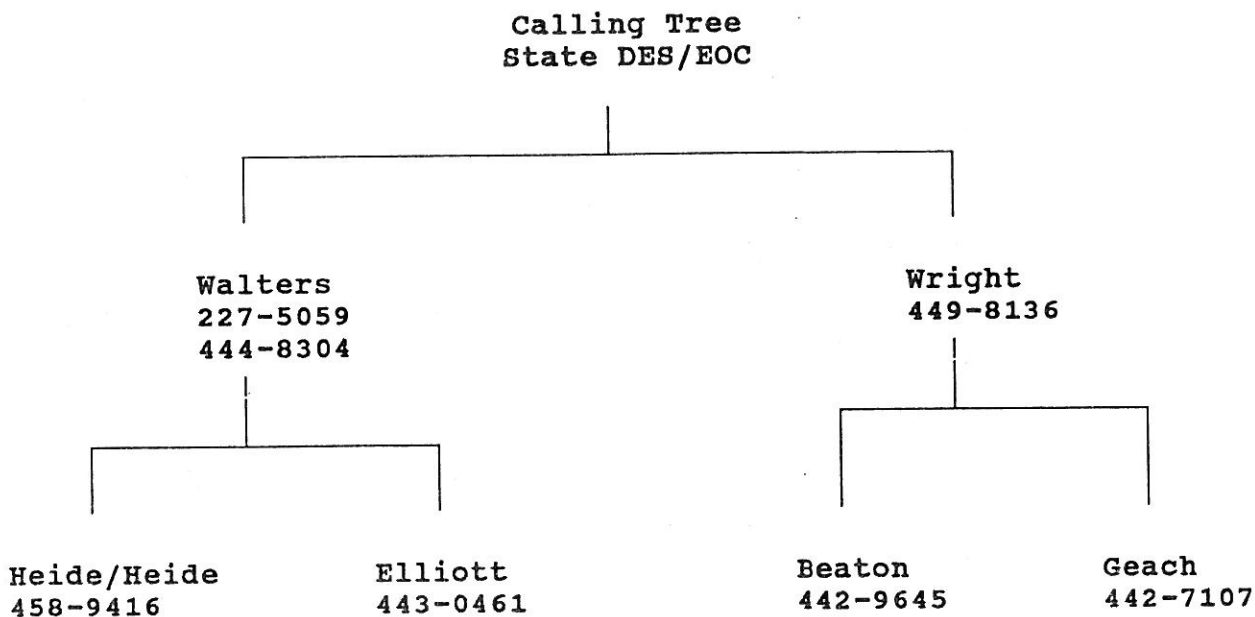
State EOC RACES Activation Plan
For Amateur Radio Operators

Upon request by authorized authorities, the designated RACES member(s) will report to the State EOC and activate the required emergency nets on the frequencies listed in Annex _.

Personnel:

Packet Operator:	John Wright, WA7TUW
HF Net Operator:	Don Heide, WB7ETT
2M Operator:	Bob Elliot, N6AHH
2M Operator:	Kevin Heide, KB7HSA
2M Operator:	Dick Beaton, N7RB
State RACES Officer:	Bruce Walters, N7MVX
State ARES Officer:	John Geach, KS7R

All personnel should be familiar with the operation of HF, 2M, and Packet equipment.



MONTANA DISASTER AND EMERGENCY SERVICES
DISTRICT REPRESENTATIVES

<u>DISTRICT #</u>	<u>NAME & MAILING ADDRESS</u>	<u>TELEPHONE</u>
1	William Thomas 2501 South Reserve Street Missoula, MT 59801	Business: 243-4152 State Line: 125-4152 FAX: (DSL -Forestry Division) 542-4217
2	Bill Bishop P.O. Box 1078 (120 8th Avenue South) Fergus Co. Complex) Lewistown, MT 59457	Business: 538-8055 FAX: (Fergus County S.O.) 538-3860
3	James H. Anderson 1100 North Main Helena, MT 59620-2111	Business: 444-6911 State Line: 140-6911 FAX: 444-6965
4	Norman R. Parrent P.O. Box 782 Miles City, MT 59301	Business: 232-2809 State Line: 133-2217 FAX: (Custer County S.O.) 232-7477

<u>District #1</u>	<u>District #2</u>	<u>District #3</u>	<u>District #4</u>
Beaverhead	Blaine	Broadwater	Big Horn
Deer Lodge	Carbon	Gallatin	Carter
Flathead	Cascade	Lewis & Clark	Custer
Granite	Chouteau	Meagher	Daniels
Jefferson	Fergus	Park	Dawson
Lake	Glacier		Fallon
Lincoln	Golden Valley		Garfield
Madison	Hill		McCone
Mineral	Judith Basin		Powder River
Missoula	Liberty		Prairie
Powell	Musselshell		Richland
Ravalli	Petroleum		Roosevelt
Sanders	Phillips		Rosebud
Silver Bow	Pondera		Sheridan
	Stillwater		Treasure
	Sweet Grass		Valley
	Teton		Wibaux
	Toole		Yellowstone
	Wheatland		
	City of Great Falls		

MEMORANDUM OF UNDERSTANDING
BETWEEN
THE FEDERAL EMERGENCY MANAGEMENT AGENCY
AND
THE AMERICAN RADIO RELAY LEAGUE, INC.



I. PURPOSE

The purpose of this document is to state the terms of a mutual agreement (Memorandum of Understanding) between the Federal Emergency Management Agency (FEMA) and the American Radio Relay League (ARRL), that will serve as a framework within which volunteer personnel of the ARRL may coordinate their services, facilities, and equipment with FEMA in support of nationwide State and local emergency communications functions. It is intended, through joint coordination and exercise of the resources of ARRL, FEMA, and Federal, State and local governments, to enhance the nationwide posture of emergency communications readiness for any conceivable emergency.

II. RECOGNITION

The Federal Emergency Management Agency recognizes that the ARRL is the principal organization representing the interests of more than 400,000 U.S. radio amateurs, and because of its organized emergency communications capability can be of valuable assistance in providing critical and essential communications during emergencies and disasters when normal lines of communication are disrupted.

The American Radio Relay League recognizes FEMA as the Agency chartered as the central point of contact within the Federal Government for a wide range of emergency management activities in both peace and war time. FEMA is dedicated to working closely with all the members of the emergency management community to achieve a realistic state of preparedness and an increased capacity to respond to emergencies of all types.

III. ORGANIZATION OF THE AMERICAN RADIO RELAY LEAGUE

The American Radio Relay League is a noncommercial membership association of radio amateurs, organized for the promotion of interest in Amateur Radio communication and experimentation, for the establishment of networks to provide communications in the event of disasters or other emergencies, for the advancement of the radio art and of the public welfare, for the representation of the radio amateur in legislative matters, and for the maintenance of fraternalism and a high standard of conduct. A primary responsibility of the Amateur Radio Service, as established by the Federal Communications Commission's Rules and Regulations (47 C.F.R. Part 97), is the rendering of public service communications for the general public, particularly in times of emergency when normal communications are not available. Using Amateur Radio operators in the amateur frequency bands, the ARRL has been serving the general public, both directly and through government and relief agencies, for more than 50 years. To that end, the League organized the Amateur Radio Emergency Service (ARES), and created the National Traffic System (NTS).

The League's Field Organization covers the United States, including U.S. possessions and Puerto Rico, and Canada. The Field Organization is administered under an elected Section Manager in each of the 73 ARRL "sections" (a section is a League-created political boundary roughly equivalent to States and provinces, or portions thereof). The Section Manager appoints a Section Emergency Coordinator, who (along with appointed local and District Emergency Coordinators)

directs ARES/emergency communications preparedness activities in each section. The Section Manager also appoints a Section Traffic Manager to supervise NTS/formal-message traffic operations in each section. Many ARRL members are also licensed RACES operators. The League advocates dual membership and cooperative efforts between ARES and RACES groups whenever and wherever possible.

IV. ORGANIZATION OF THE FEDERAL EMERGENCY MANAGEMENT AGENCY

FEMA's national headquarters is located in Washington, D.C. There are ten Regional Offices throughout the United States. These offices provide technical and financial assistance to State and local governments to upgrade their emergency communications and warning systems. This is one method in which FEMA supports State and local governments in the fulfillment of their emergency planning preparedness, mitigation, response, and recovery responsibilities. The Director of FEMA reports directly to the President and works closely in emergency management matters with the National Security Council, the Cabinet and the White House staff.

V. RADIO AMATEUR CIVIL EMERGENCY SERVICE

The Radio Amateur Civil Emergency Service (RACES) is a part of the Amateur Radio Service that provides radio communications to local or State civil preparedness agencies during periods of local, regional, or national civil emergencies. All of the authorized frequencies and emissions allocated to the Amateur Radio Service are also available to RACES on a shared basis. In the event that the President invokes his War Emergency Powers, RACES operators using specially authorized frequencies would be the only Amateur Radio operators permitted on the air.

VI. METHOD OF COOPERATION

In order that communications resources of the ARRL Field Organization may be coordinated and utilized to the fullest advantage during disasters and emergencies, and to the extent permitted or required by law and regulation, the Federal Emergency Management Agency and the American Radio Relay League have agreed to the following:

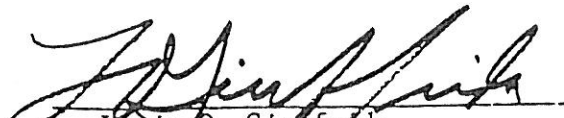
A. For national-level liaison between ARRL and FEMA, the points of contact are:

- o ARRL Headquarters
Newington, CT 06111
- o FEMA
Communications and Control Branch
State and Local Programs and Support
Washington, DC 20472

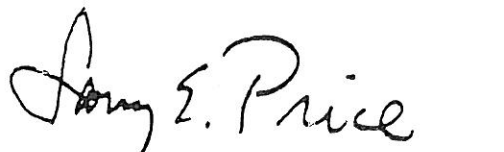
- B. FEMA, through its Regional Offices, will encourage State and local emergency management officials to interact with ARRL Section Managers and other appropriate ARRL Field Organization officials, in an effort to establish cooperative relationships with ARRL Field Organization volunteers.
- C. FEMA and ARRL will encourage the development of operating plans within the FEMA Regions and at the State and local government levels such that the communications services, equipment and facilities of the Amateur Radio Service may be suitably utilized.
- D. FEMA and ARRL will distribute copies of this agreement through channels to FEMA Regional Offices and ARRL Field Organization officials respectively.

VII. IMPLEMENTATION

This Memorandum of Understanding shall take effect upon signature by authorized officials of the ARRL and FEMA. This memorandum may be amended by mutual agreement of both parties, and will remain in effect until terminated. ARRL and FEMA will periodically review this agreement and coordinate such revisions as may be necessary. Upon 90 days written notice, this memorandum may be terminated by either party.


Louis O. Giuffrida
Director
Federal Emergency Management Agency

3 Aug 84
Date


Larry E. Price
President
The American Radio Relay League, Inc.

3 AUG '84
Date

THE TRAINING NET

NET PROCEDURE

The mission of RACES stations and operators is to supplement surviving communications facilities, or provide emergency communication requirements. Only official messages may be transmitted. Health & welfare and personal messages should not be handled on the RACES net. These messages should be referred to the appropriate traffic net or handled off frequency if time permits. The RACES net is a directed net and the net control is expected to maintain net discipline.

NET SCHEDULE

The Training Net meets on the 1st and 3rd Sunday of each month at 9:00 am local time at 3947 kHz. The alternate net frequency is 7247. kHz

RACES NET PREAMBLE

QST QST QST Good morning this is _____ Montana Net Control station in the Radio Amateur Civil Emergency Service. This net operates on 3947 with an alternate frequency of 7247 khz by the authority of the Federal Communications Commission and the Montana Director of Disaster and Emergency Services. This is a directed net, alerted for the purpose of a training drill. Please list your comments when checking in. Please restrict your comments to RACES business. New members will be invited to join after comments.

Those not directly concerned with this RACES exercise are requested to keep this frequency clear. This is _____ proceeding with the role call.

- > Call the roll by county
- > Make a note of stations listing comments
- > Ask for Late or Missed stations and relays
- > Call stations with comments and have them proceed.

For example K7XXX checks in with one comment for K7YYY.
You would tell K7XXX to call K7YYY with his comment.

- > Invite new stations to check in. Get Call, Name, and Phone #
Advise new stations to register with their local DES office
- > Secure net

ANNEX I

RACES NET PREAMBLE

QST QST QST

Good morning this is Montana Net Control station in the Radio
Amateur Civil Emergency Service.

This net operates on 3.947 with an alternate frequency of 7.247 khz.

This is a directed net, alerted for the purpose of a training drill.

Please list your comments when checking in.

Please restrict your comments to RACES business.

New members will be invited to join after comments.

Those not directly concerned with this RACES exercise are requested to keep
this frequency clear.

This is.....proceeding with the role call.

Call Roll and then proceed with the following

- > Are there any late or missed Races stations?
- > Are there any stations that have questions or comments for Races?
- > Are there any new stations wishing to become A Races member?
- > Are there any late or missed Races check ins ?
- > Is there any other business for the net?

I will now secure this Races net at:..... UTC. Call:.....

DATE:...../...../.....

K7LMT 8/20/2009

ANNEX A -TEXT
RACES PERSONNEL

Montana State Races officer (Lincoln)
William E Kornec, K7LMT
Home 362-4521
work 362-4521
E Mail kornec@lincnet.net

District 5 Races Coordinator (Billings)
Terry Whiteside, W7WWW
Home 652 3811
Work
E Mail twhitesd@wtp.net

Asst. State Races Officer
Morris Campbell
Home 461-5767
Work
E Mail wa7w@hotmail.com

District 6 Races Coordinator (FRAZER)
Loren Nichols, AA7MT
Home 392 5751
Work
E Mail aa7mt@arrl.net

State Paket Coordinator (Helena)
Donald Heide, W7MRI
Home 458-9416
Cell 406 439 2085
E Mail dheide@prodigy.net

State Net Coordinator (Worden)
Todd Gansel, AE7V
Home 967-2335
E Mail AE7V@ARRL.NET

Surplus Property Coordinator (Helena)
Wesly Rowe, K7wes (Silver City)
Home 429 2214
E Mail k7wes@hotmail.com

District 1 Races Coordinator (Missoula)
Kevin Ball, Butte
Home 782 5958
E Mail ad7aj@arrl.net

District 2 Races Coordinator (Great Falls)
Mike Kassner, Big Sandy
Home 378 2653
Work
E Mail mikenanna@mtintouch.net

District 4 Races Coordinator (Miles City)
Jim Zabrocki, K7TVE
Home 232-6799
Work 874-3490
E Mail midi@midrivers.com

K7LMT 3/01/2009

ANNEX B RACES Frequencies
LIST OF FREQUENCIES
(WartimeEmergency Communications)

The frequency bands listed below are available to stations transmitting communications in RACES on a shared basis with amateur service. In the event of an emergency that necessitates the invoking of the Presidents War Emergency Powers under the provision of Section 706 of the communications Act of 1934, as amended, only RACES stations and amateur stations participating in RACES may transmit on the following frequencies:

1800-1825	28.55-28.75
1975-2000	29.237-29.273
3500-3550	29.45-29.65
3930-3980	50.35-50.75
3984-4000	52-54
7079-7125	144.50-145.71
7245-7255	146-148
10100-10150	2390-2450
14047-14053	
14220-14230	
14331-14350	
21047-21052	
21228-21267	

In addition, 1.25 cm (220.0-225.0), 70 cm (420.0-450.0), and 23 cm (12.40-13.00 mhz) are available.

THE ABOVE ARE AVAILABLE TO RACES STATIONS ON A NATIONAL BASIS.
MONTANA STATE RACES WILL OPERATE ON THE FOLLOWING FREQUENCIES:

Net:	3.947	Alt	7.247
District-1:	3.910	Alt	7.210
District-2:	3.920	Alt	7.220
District-3:	3.930	Alt	7.230
District-4:	3.940	Alt	7.240
District-5:	3.950	Alt	7.250
District-6:	3.960	Alt	7.260
State EOC	3.970	Alt	7.270

The higher frequencies used will depend on your location within the state. These frequencies will correspond to locally used repeater frequencies and will depend on the local Races plan. Generally repeater frequencies will be used within the districts for district communication and 75 meters used for voice communications between Districts and the State EOC.

ANNEX B

K7LMT 8/20/2009

GENERAL MESSAGE

TO:		POSITION	
FROM		POSITION	
SUBJECT		DATE	TIME
MESSAGE:			
SIGNATURE/POSITION			
REPLY			
DATE	TIME	POSITION	

ANNEX E REGISTRATION FORM

RADIO AMATEUR CIVIL EMERGENCY SERVICE
REGISTRATION FORM

Name: _____
Call: _____
Address: _____
City: _____ State: _____ Zip: _____
Bus. Phone: _____ Home Phone: _____
License Class: _____ Primary Radio Interest: _____

County: _____
Check (X) Bands/Modes you can operate:
160 _____ 80 _____ 40 _____ 20 _____ 15 _____ 10 _____ 6 _____ 2 _____ 220 _____ Other: _____

CW: _____

FM: _____

RTTY: _____

SSB: _____

MOBILE: _____

PACKET: _____ DIGITAL MODES: _____

IF OPERATING PACKET, THE CALLSIGN OF YOUR PBBS Is: _____

Can you operate without commercial power Yes ____ No ____

If yes what bands ? _____

The State RACES organization supplements state and local government communications during disaster or emergency situations.

By completing and signing this registration form you are volunteering to be a member of the State RACES organization and are responsible for:

1. Briefing the State RACES Officer of any changes in your equipment or amateur status that may affect RACES communications operations;
2. Developing a strong background in emergency communications procedures and FCC Rules and Regulations;
3. Being available when emergency communications are needed;
4. Notifying the State RACES Officer, in writing, when terminating membership in RACES;

Send completed form to:

WILLIAM KORNEC (K7LMT)
MONTANA State RACES Officer
Po Box 965
LINCOLN, MT 59639

Sign Here : _____ Date _____

Office Use Only

State RACES OFFICER-Signed _____ Date _____

Approved: _____ Disapproved: _____

Administrator, DES-Signed _____ Date _____

Approved: _____ Disapproved: _____

ANNEX E

K7LMT 1/21/07

ANNEX F Call tree
STATE DES RACES ACTIVATION PLAN
For Amateur Radio Operators

Upon request by authorized authorities, the designated RACES member(s) will report to the

State EOC and activate the required emergency nets on the frequencies listed in (Annex B).

Tam Kolar: Montana State DES-406 841 3958
P.O box 4789
Fort Harrison, MT. 59636

Personell:

Paket Operator(s): William Kornec-362 4521
Bill Erhardt-227 7219
HF Net Operator(s): Morris Campbell-461 5767
Bill Erhardt-227 7219
William Kornec-362 4521
Wesley Rowe-439 2214
2M Operator(s): Bob Solemon-442 6118
Wesley Rowe-439 2214

Personell should be familiar with operation of HF, 2meter and Paket equipment.

Calling Tree
State DES/EOC

1-William E Kornec-362 4521----Morris CAMPBELL-461 5767
Wesly Rowe-439 2214

2-Bill Erdhardt-227 7219-----Don Heide-458 9416

8/20/2007

ANNEX F

K7LMT

**MONTANA DISASTER AND EMERGENCY SERVICES
DISTRICT REPRESENTATIVES**

DISTRICT #	NAME AND ADDRESS	EMAIL ADDRESS	TELEPHONE
1	Kevin Ball	ad7aj@arri.net	782-5958
2	Mike Kassner	mikeananna@mtintouch.net	378-2653
3	William E Kornec	kornec@lincnet.net	362-4521
4	Jim Zabrocki	midi@midrivers.com	232-6799
5	Terry Whiteside	twhitesd@wtp.net	652-3811
	Alternate" Bob Brightmire	<u>brightmire@mt.gov</u>	
6	Loren Nichols	aa7mt@arri.net	392-5751

Dist 1: Butte/Silverbow, Deer Lodge, Flathead, Granite, Lake, Lincoln, Mineral, Missoula, Powell, Ravalli, Sanders

Dist 2: Blain, Cascade, Chouteau, Glacier, Hill, Liberty, Pondera, Teton, Toole

Dist 3: Beaverhead, Broadwater, Gallatin, Jefferson, Lewis and Clark, Madison, Meager, Park, Sweet Grass

Dist 4: Carter, Custer, Dawson, Fallon, Garfield, McCone, Powder River, Prairie, Richland, Wibaux

Dist 5: Big Horn, Carbon, Golden Valley, Musselshell, Rosebud, Stillwater, Treasure, Wheatland, Yellowstone

Dist 6: Daniels, Fergus, Judith Basin, Petroleum, Phillips, Roosevelt, Sheridan, Valley

ANNEX G